

FOR LEASE

3333 41ST STREET E.

MINNEAPOLIS, MN 55406



Location:

Southeast quadrant of 41th Street E. & Dight Avenue (South Minneapolis)

Use:

Office/Warehouse Space (Rail Served)

Perfect for Grain Storage or Shop Space with Outside Storage

Space Available:

1.4 million bushel grain storage capacity

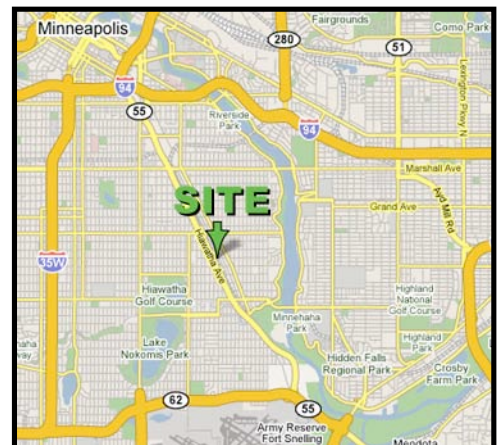
Office = 600 sf

Shop = 900 sf

Warehouse = 1,500 sf

Land Area: .77 Acres

Year Built: 1930 (with many upgrades)



Net Rents: \$4 net/sf

Taxes:

Estimated 2008 at \$2.15/sf

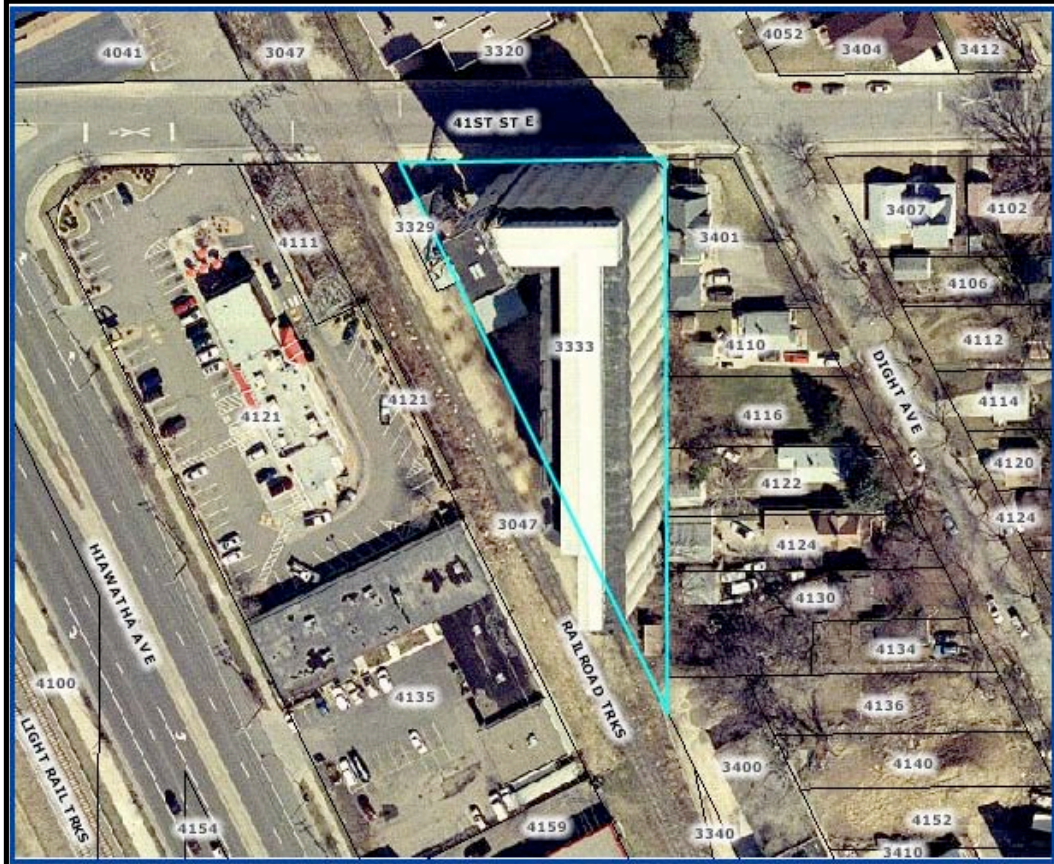
- ∞ *Great Access and Visibility*
- ∞ *Signage Available*
- ∞ *Rail Served*
- ∞ *Very Economical Option*

For additional information call (651) 222-3366

All information is furnished from sources judged to be reliable; however, no guarantee is made as to its accuracy or completeness.

3333 41ST STREET E.

MINNEAPOLIS, MN 55406



For additional information call (651) 222-3366

All information is furnished from sources judged to be reliable; however, no guarantee is made as to its accuracy or completeness.